

# BOTTEGA STAR



Bottega Star is a unique dining chair with a comfortable upholstered seat and backrest on steel base available in various of different base options. Each leg is tipped with a plastic glide screwed into the foot. The seat has a steel structure with "S" shape springs for extra flexibility and strength. This steel frame is molded by an injecting polyurethane foam. This contemporary chair is suitable for both residential and commercial use.

## LEATHERETTE



black



white

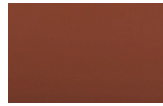


light grey



grey

## PPM



cinnamon

## WOOL (CAMIRA)



dark grey



silver



turquoise



deep maroon

## FABRIC (Camira-Era)



grey



red

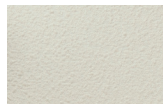
## BOUCLE FABRIC



blue-black

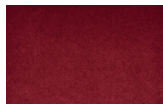


orange (Camira)



Off White (Camira)

## VELVET



cherry

## DIMENSIONS

31.8"h x 24"w x 22.8"d

## WEIGHT

13v lbs

## CUBIC FEET

8.5

## SPECIAL ORDER

min. of 8 required

## COM req.

1.5 yd

## BASE

Black Powder /  
Gold Finish

## ADJUSTER BASE

Chrome / Natural &  
Walnut Veneer

## STAR-RING BASE

Black Powder /  
Walnut Veneer

## STAR-X BASE

Walnut Veneer



24" 61



22.8" 58

25 1/2" 64.8

18" 45.7